

BURGIN ATKINSON

& C O M P A N Y

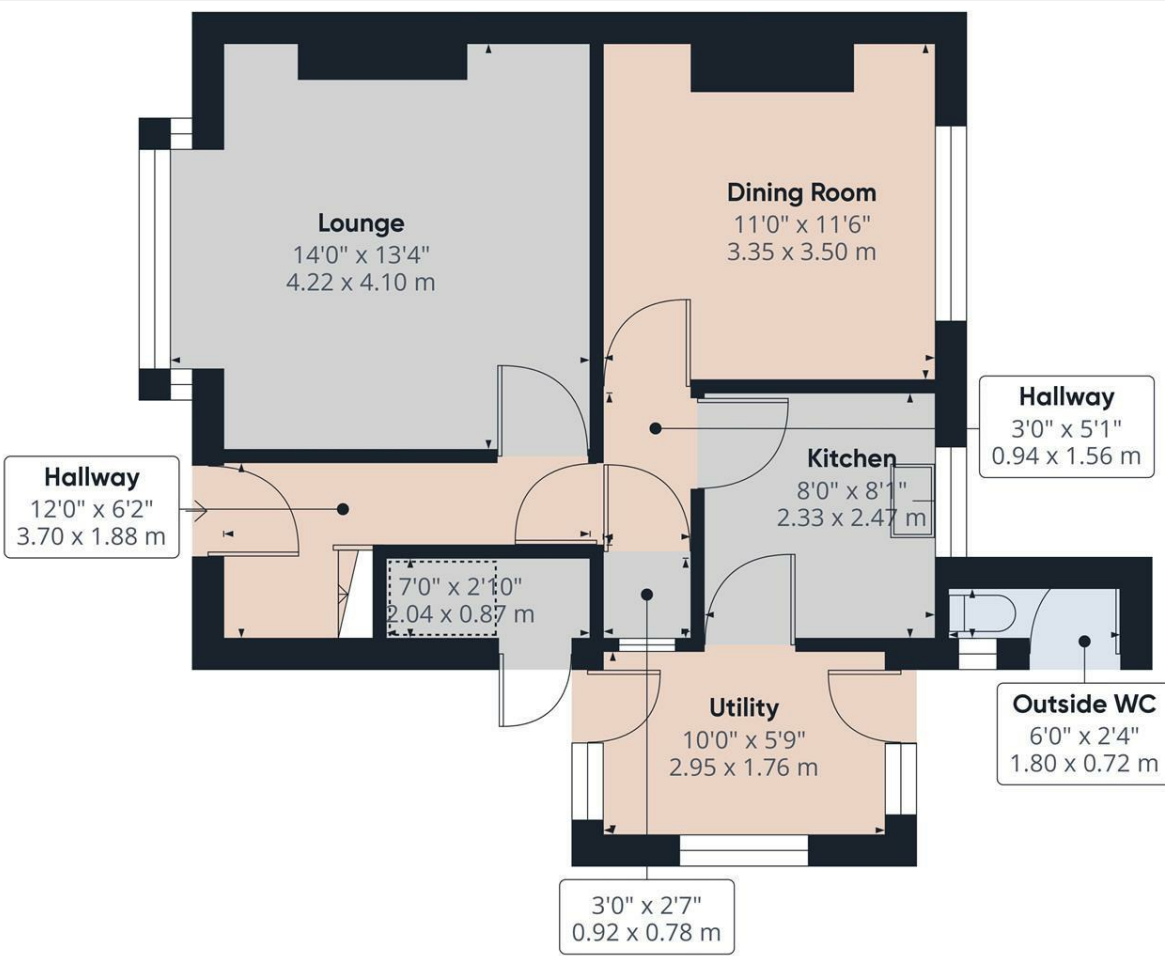


52 Northfield Way, Retford, Nottinghamshire, DN22 7LW

3 BEDROOM SEMI DETACHED HOUSE REQUIRING A SCHEME OF MODERNISATION AND STRUCTURAL WORK - CLOSE TO LOCAL AMENITIES AND LOCAL SCHOOLS - ENCLOSED REAR GARDEN AND PARKING - GARAGE/OUTBUILDING - 2 GOOD SIZED RECEPTION ROOMS - KITCHEN WITH SEPARATE UTILITY ROOM - OFFERED WITH NO UPWARD CHAIN - EPC D

- 3 BEDROOM SEMI DETACHED HOUSE
- FULL MODERNISATION + STRUCTURAL WORK REQUIRED
- NO UPWARD CHAIN
- ENCLOSED REAR GARDEN AND PARKING
- KITCHEN AND UTILITY ROOM
- TWO GOOD SIZED RECEPTION ROOMS
- CLOSE TO LOCAL AMENITIES
- BOTH PRIMARY AND SECONDARY SCHOOLS NEARBY

£130,000



Ground Floor

Approximate total area^m
531.31 ft²
49.36 m²

Reduced headroom
9.36 ft²
0.87 m²

(1) Excluding balconies and terraces.

Reduced headroom
(below 1.5m/4.92ft)

While every attempt has been made to ensure accuracy, all measurements are approximate, not to scale. This floor plan is for illustrative purposes only.

GIRAFFE360

